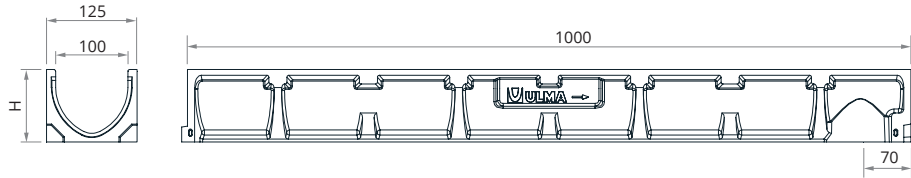


Load Class
up to C-250
EN-1433 Standard

RAPIDSELF100



ULMA polymer concrete channel, model SR100. External width 125 mm, internal width 100 mm. External heights available between 50 and 150 mm, in modules 1 linear metre long, optimised V-shape with self-cleaning effect designed especially for channel stretches with no longitudinal slope. No-screw Rapidself fixing system with up to 8 fixing points.

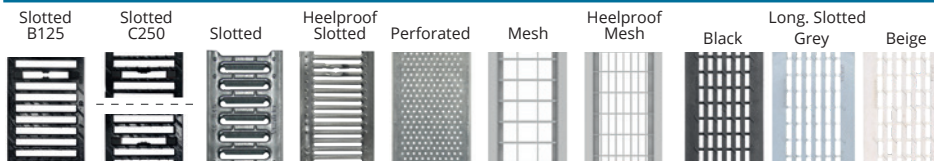


CHANNELS

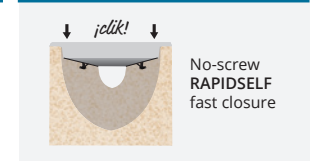
Channel code	L mm	Total height mm	Channel width mm		Ø Outlet diameter mm	Units per pallet
			External	Internal	Vertical	
SR100H50R*	1000	50	125	100	110	72
SR100H75R*	1000	75	125	100	110	75
SR100H100R	1000	100	125	100	110	60
SR100H125R	1000	125	125	100	110	60
SR100H150R	1000	150	125	100	110	60

*U-shaped cross section.

GRATING

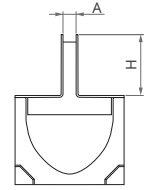
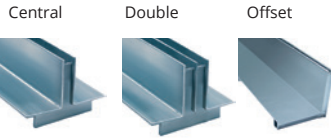


FIXING SYSTEM



Material	Design	Load class	Code	Length mm	Width mm	Opening mm	Units per linear metre	Intake area cm ² /ml	Fixing points
DUCTILE IRON	SLOTTED	B125	FNX100SRBM	500	125	16	2	566	4 x ml
	SLOTTED	C250	FNX100SRCM	500	125	16	2	566	8 x ml
	HEELPROOF SLOTTED	B125	FNHX100SRBM	500	125	8	2	389,42	8 x ml
GALVANISED STEEL	SLOTTED	A15	GN100SRA	1000	125	9	1	265	4 x ml
	HEELPROOF SLOTTED	A15	GNH100SRA	1000	125	6	1	308	4 x ml
	PERFORATED	K3	GP100SRA	1000	125	ø6	1	164	4 x ml
	MESH	B125	GEX100SRB	1000	125	30 x 30	1	783	4 x ml
	HEELPROOF MESH	B125	GEHX100SRB	1000	125	30 x 10	1	670	4 x ml
STAINLESS STEEL	SLOTTED	A15	IN100SRA	1000	125	9	1	265	4 x ml
	HEELPROOF SLOTTED	A15	INH100SRA	1000	125	6	1	308	4 x ml
	PERFORATED	K3	IP100SRA	1000	125	ø6	1	164	4 x ml
COMPOSITE	HEELPROOF MESH	B125	IEHX100SRB	1000	125	30 x 10	1	670	4 x ml
	LONG. SLOTTED BLACK	A15	PNLH100SRAM	500	125	8	2	366	4 x ml
	LONG. SLOTTED GREY	A15	PNLH100SRAM-GRIS	500	125	8	2	366	4 x ml
	LONG. SLOTTED BEIGE	A15	PNLH100SRAM-BG	500	125	8	2	366	4 x ml

RAPIDSELF100



SLOT GRATING

Load class	Slot height H (mm)	Slot position	Product type	Code			Length (mm)	Width (mm)	Slot width A (mm)	Intake area cm ² /ml
				Galvanised steel	Stainless steel 304	Stainless steel 316L				
A15	25	Central	Grating	GR100SOAH25E10	IR100SOAH25E10	IR100SOAH25E10X	1000	100	10	100
			Access Unit	GR100SOAMAH25E10	IR100SOAMAH25E10	IR100SOAMAH25E10X	500	100	10	100
			Access Unit	GR100SOAMA1212H25	IR100SOAMA1212H25	IR100SOAMA1212H25X	120 x 120	100	10	100
C250	70	Central	Grating	GR100SOCH70E10	IR100SOCH70E10	IR100SOCH70E10X	1000	100	10	100
			Access Unit	GR100SOCMAH70E10	IR100SOCMAH70E10	IR100SOCMAH70E10X	500	100	10	100
		Central (Double)	Grating	GDR100SOCH70E8	IDR100SOCH70E8	IDR100SOCH70E8X	1000	100	2 X 8	160
			Access Unit	GDR100SOCMAH70E8	IDR100SOCMAH70E8	IDR100SOCMAH70E8X	500	100	2 X 8	160
		Offset	Grating	GRL100SOCH70E10	IRL100SOCH70E10	IRL100SOCH70E10X	1000	100	10	100
			Access Unit	GRL100SOCMAH70E10	IRL100SOCMAH70E10	IRL100SOCMAH70E10X	500	100	10	100
105	Offset	Grating	GRL100SOCH105E10	IRL100SOCH105E10	IRL100SOCH105E10X	1000	100	10	100	
		Access Unit	GRL100SOCMAH105E10	IRL100SOCMAH105E10	IRL100SOCMAH105E10X	500	100	10	100	

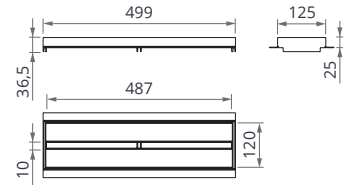
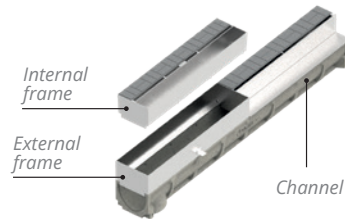
*Possibility of having a length of 500mm for gratings

**Tool available to lift manholes UTAGRLSOCMA

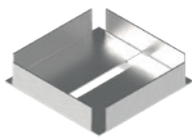
MANHOLE COMPRISED OF EXTERNAL AND INTERNAL FRAME



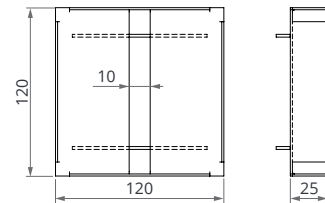
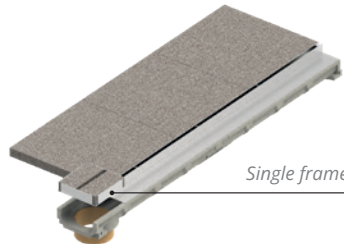
GR100SOAMAH25E10



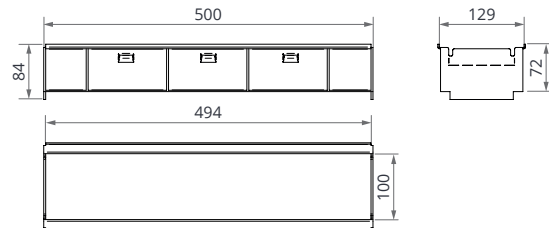
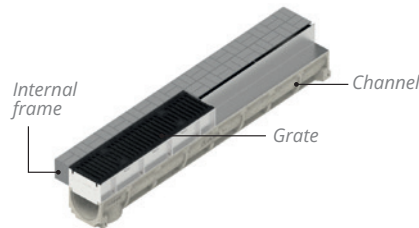
MANHOLE COMPRISED OF SINGLE FRAME



GR100UOAMA1212H25



MANHOLE COMPRISED OF EXTERNAL FRAME + GRATE



Code

Galvanised steel	Stainless steel 304	Stainless steel 316L
ASRG100SH70	ASRI100SH70	ASRI100SH70X
ASRG100SH105	ASRI100SH105	ASRI100SH105X

*The code refers only to the external frame, the grating is not included and must be ordered separately

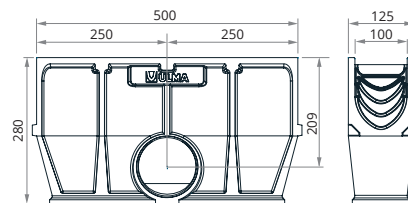
RAPIDSELF100

SUMP UNITS



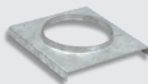
Open outlet.

Sump unit code	Length mm	Total height mm	Sump unit width mm	Side outlets Ø mm
ASR100	500	280	125	110



OPEN END CAP

Channel	Code	Width (mm)	Height mm	Ø mm
SR100H50R	TSR100H50A	125	50	40
SR100H75R	TSR100H75A	125	75	50
SR100H100R	TSR100H100A	125	100	75
SR100H125R	TSR100H125A	125	125	110
SR100H150R	TSR100H150A	125	150	110



CLOSED END CAP

Code	Width (mm)	Height mm
TSR100H50C	125	50
TSR100H75C	125	75
TSR100H100C	125	100
TSR100H125C	125	125
TSR100H150C	125	150



BUCKET

Code
CASR100

